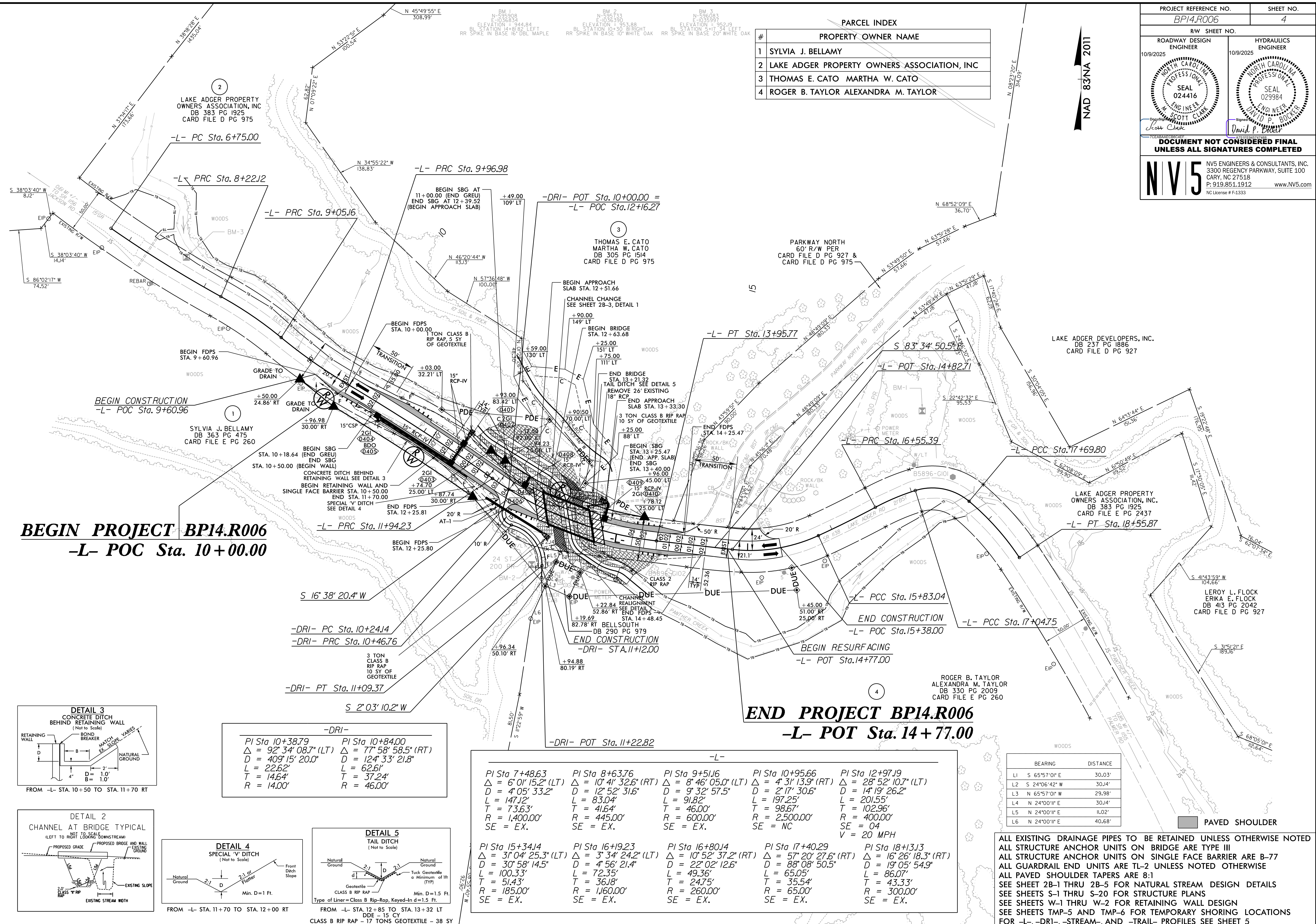


8/17/2019

8/23/2025
B:\Projects\Proj193_R01_PSH_04.dgn
E:\Projects\Proj193_R01_PSH_04.dgn



PARCEL INDEX	
#	PROPERTY OWNER NAME
1	SYLVIA J. BELLAMY
2	LAKE ADGER PROPERTY OWNERS ASSOCIATION, INC
3	THOMAS E. CATO MARTHA W. CATO
4	ROGER B. TAYLOR ALEXANDRA M. TAYLOR

PROJECT REFERENCE NO.
BP14.R006

SHEET NO.
4

RW SHEET NO.
10/9/2025

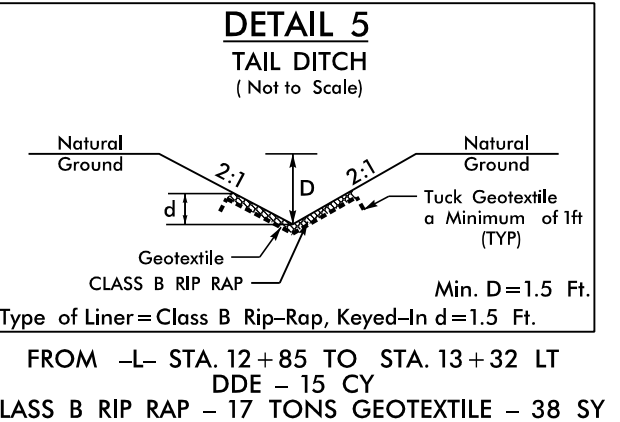
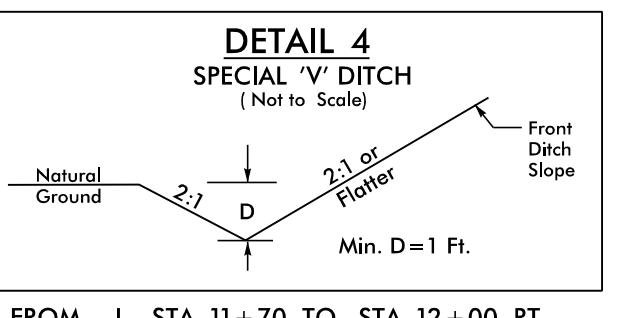
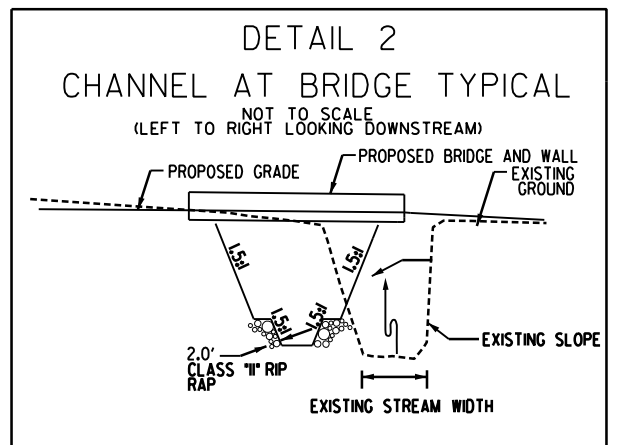
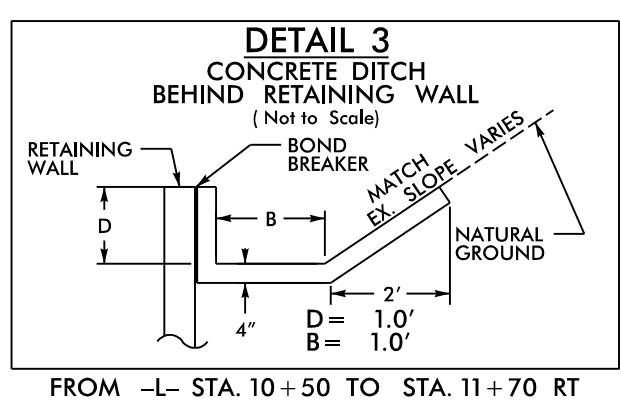
HYDRAULICS ENGINEER
10/9/2025

DOCUMENT NOT CONSIDERED FINAL
UNLESS ALL SIGNATURES COMPLETED

NV5 ENGINEERS & CONSULTANTS, INC.
3300 REGENCY PARKWAY, SUITE 100
CARY, NC 27518
P: 919.851.1912
www.NV5.com
NC License # F-1333

BEGIN PROJECT BP14.R006
-L- POC Sta. 10+00.00

END PROJECT BP14.R006
-L- POT Sta. 14+77.00



-DRI-	
PI Sta 10+38.79 Δ = 92° 34' 08.7" (LT) D = 409' 15" 20.0" L = 22.62' T = 14.64' R = 14.00'	PI Sta 10+84.00 Δ = 77° 58' 58.5" (RT) D = 124' 3.3' 21.8" L = 62.61' T = 37.24' R = 46.00'

-L-				
PI Sta 7+48.63 Δ = 6° 01' 15.2" (LT) D = 4° 05' 33.2" L = 147.12' T = 73.63' R = 1,400.00' SE = EX.	PI Sta 8+63.76 Δ = 10° 41' 32.6" (RT) D = 12° 52' 31.6" L = 83.04' T = 41.64' R = 445.00' SE = EX.	PI Sta 9+51.16 Δ = 8° 46' 05.0" (LT) D = 9° 32' 57.5" L = 91.82' T = 46.00' R = 600.00' SE = EX.	PI Sta 10+95.66 Δ = 4° 31' 13.9" (RT) D = 2° 17' 30.6" L = 197.25' T = 98.67' R = 2,500.00' SE = NC	PI Sta 12+97.19 Δ = 28° 52' 10.7" (LT) D = 14° 19' 26.2" L = 201.55' T = 102.96' R = 400.00' SE = 04 V = 20 MPH
PI Sta 15+34.14 Δ = 31° 04' 25.3" (LT) D = 30° 58' 14.5" L = 100.33' T = 51.43' R = 185.00' SE = EX.	PI Sta 16+19.23 Δ = 3° 34' 24.2" (LT) D = 4° 56' 21.4" L = 72.35' T = 36.18' R = 1,160.00' SE = EX.	PI Sta 16+80.14 Δ = 10° 52' 37.2" (RT) D = 22° 02' 12.6" L = 49.36' T = 24.75' R = 260.00' SE = EX.	PI Sta 17+40.29 Δ = 57° 20' 27.6" (RT) D = 88° 08' 50.5" L = 65.05' T = 35.54' R = 65.00' SE = EX.	PI Sta 18+13.13 Δ = 16° 26' 18.3" (RT) D = 19° 05' 54.9" L = 86.07' T = 43.33' R = 300.00' SE = EX.

BEARING	DISTANCE
L1 S 65°57'01" E	30.03'
L2 S 24°06'42" W	30.14'
L3 N 65°57'01" W	29.98'
L4 N 24°00'11" E	30.14'
L5 N 24°00'11" E	11.02'
L6 N 24°00'11" E	40.68'

ALL EXISTING DRAINAGE PIPES TO BE RETAINED UNLESS OTHERWISE NOTED
ALL STRUCTURE ANCHOR UNITS ON BRIDGE ARE TYPE III
ALL STRUCTURE ANCHOR UNITS ON SINGLE FACE BARRIER ARE B-77
ALL GUARDRAIL END UNITS ARE TL-2 UNLESS NOTED OTHERWISE
ALL PAVED SHOULDER TAPERS ARE 8:1
SEE SHEET 2B-1 THRU 2B-5 FOR NATURAL STREAM DESIGN DETAILS
SEE SHEETS S-1 THRU S-20 FOR STRUCTURE PLANS
SEE SHEETS W-1 THRU W-2 FOR RETAINING WALL DESIGN
SEE SHEETS TMP-5 AND TMP-6 FOR TEMPORARY SHORING LOCATIONS
FOR -L-, -DRI-, -STREAM-, AND -TRAIL- PROFILES SEE SHEET 5